



PROJECTS

MATHIOU SERVICES

"MEETING ALL YOUR BUILDING & MAINTENANCE NEEDS"

1300 363 423

Table of Contents

Introduction	4
Playgrounds	6
Marsden Park Childcare Centre – Playground Development	8
Kelso Childcare Centre – Playground Upgrade	10
Tarragindi – Playground Upgrade	12
Archers Street – Playground Upgrade	14
Currumbin Playscape Upgrade	16
Fitouts	18
Burleigh - Commercial Office Fitout	20
Brisbane High-Rise - Commercial Office Fitout	22
Aroona Interior & Exterior Fit out	24
Kitchens	26
Airport West – Kitchen Upgrade	28
Tarragindi - Staffroom Extention	30
Bathrooms	32
Roseville Childcare Centre – Bathroom Upgrade	34
Floor Replacement	36
Retirement Unit - Floor Replacement	38
Painting	40
Gosnells & Morley – External & Internal Painting	42
Brisbane CBD – External & Internal Painting	44
Mathiou Services Contact Details	46





Introduction

Here at Mathiou Services, it doesn't matter if you have a large or small project that needs planning, designing or constructing, we are the solution for you.

Our team will assist you right up until the completion of a project to ensure that your vision is met. The first stage to any project is planning and the Mathiou Services team will help you create a design for your project that will meet all your needs. From there we will begin the construction stage, while ensuring everything is done in a timely manner and follows our safety protocols. We will take the stress out of transforming your facility into your vision.

Don't just take our word for it, see some of our completed projects for yourself.





Playgrounds

Every early education facility requires an exciting playground that not only suits the centre but is also practical and age appropriate for the children using it.

Mathiou Services can provide every childcare centre, school, commercial or educational facility with our expertise on the materials, design and the ideal layout for your space. As we will be with you each step of the way, this will ensure that we are creating your desired play area that will also meet Australian Standards.

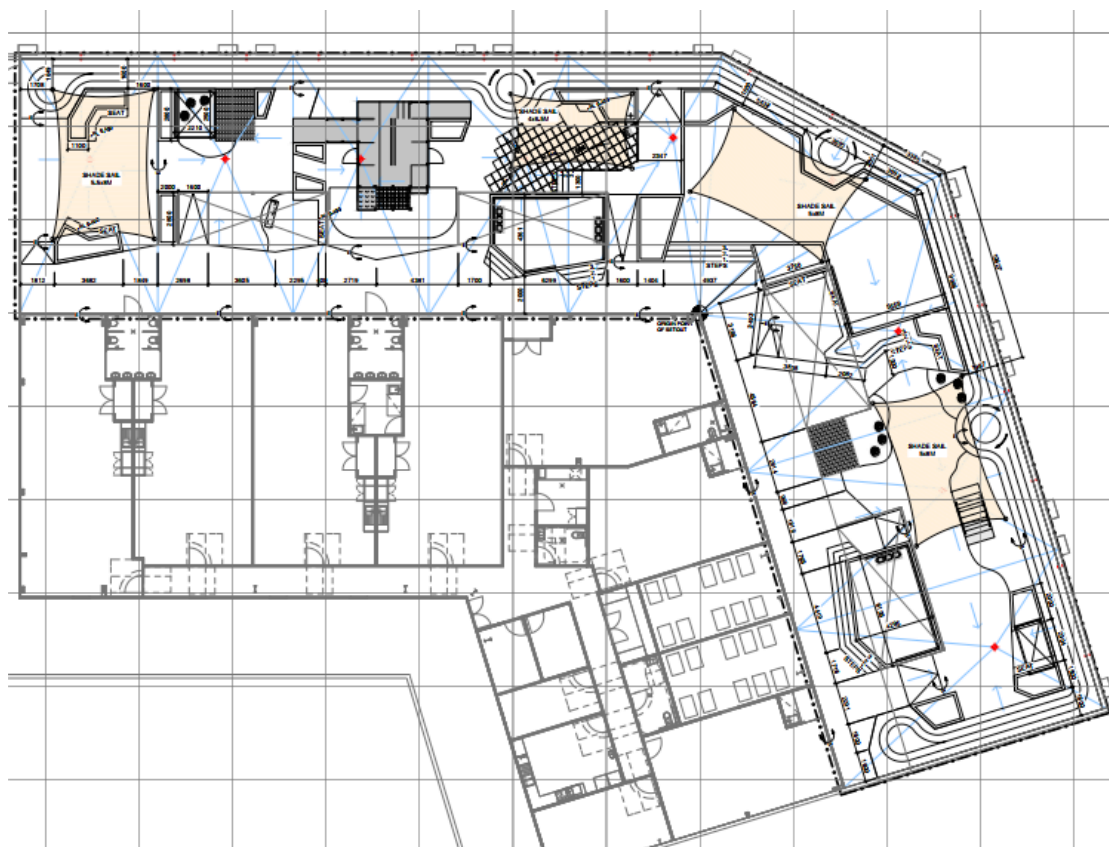




Marsden Park Childcare Centre - Playground Development

This project has taken meticulous planning and development, with a focus on giving the children attending the centre an expansive and exciting play area. Covering around 1000 square metres, our team produced a spectacular playground which includes;

- 200 m2 of hardwood decking accompanied by seating
- 90 m long concrete bike track snaking around the back of the playground, giving the children a perfect area to practice riding their bikes
- An abundance of native flora across the playground and in established hardwood garden beds
- Two huge bark pits for the kids to play and explore in
- An interactive sandstone block pave water feature
- Two kwilia hardwood cubby houses, fitted out with benches and seats inside for the kid's enjoyment
- Two generously sized double washed sand pits, ready for the kids to build sandcastles
- Stained cypress pine arbour frames spread across the playground
- Certified mulch softfall, Astroturf and wet pour rubber across the playground
- Native debarked hardwood log seats for the children and staff to relax on or enjoy an afternoon snack on.

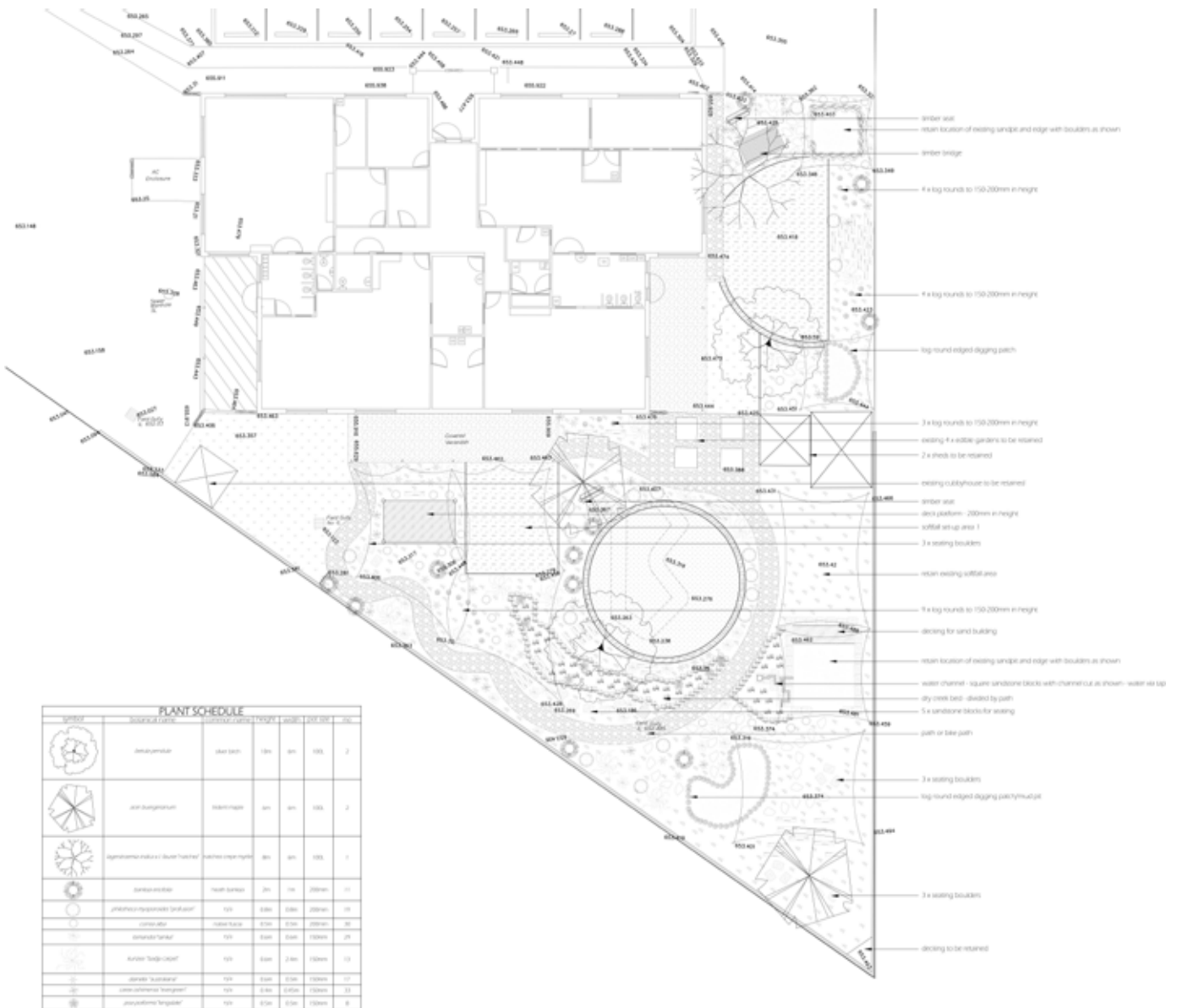




Kelso Childcare Centre - Playground Upgrade

At Kelso the Mathiou Services team produced a new outdoor area for the children and staff to enjoy. The natural design included many textures and features where the children could explore and learn along the way. The playground included;

- Timber seating
- Sand pit with boulder edging
- Timber bridge
- Round log steppers
- Digging patch/mud pit with log edging
- Decomposed granite bike bath
- Edible gardens
- Shed
- Cubbyhouse
- Decking platforms
- Softfall with astro turf area
- Seating boulders
- Water channel
- Dry creek bed divided by a path.



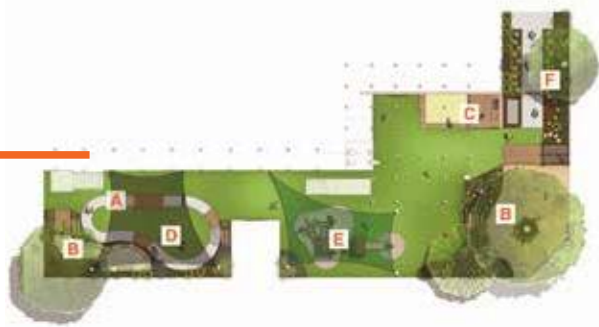


Tarragindi - Playground Upgrade

This unique playground was built based on plans provided and was in addition to a building extension where we added a new staffroom with a kitchenette and new retaining walls. It also included a bathroom upgrade.

The full scope included:

- Demolition of the entire play yard & removing all unwanted surface materials, play and shade structures, unwanted gardens and any unwanted soils including waste management
- Excavation of earth under existing building and level playground
- Boundary fence- Remove existing playscape fence & retaining wall and install new retaining wall posts and sleepers
- Install new drainage behind perimeter retaining wall and backfill
- Excavate and drill new footings and piers
- Installation of form work placement and connect reinforcement steel and pour concrete to inground piers
- Plumbing and electrical rough in
- Install new drainage points
- Install tiered paved entry with plant-a-boxes and stepping logs to create new



access point

- Install sand play/cubby structure with mud kitchen, shop counter and decorative windows
- Supply and construct custom log fort including slide, stepped log climbing activity, net rope bridge, access ladder, and viewing window
- Create a hexagonal bench seating area around tree
- Install a concrete bike track that flows around the play yard including a range of hardwood timber and cobble stone tactile inserts for sensory stimulation
- Construct a creek bed including a water tap pump installed on a deck with sandstone boulders, log crossings and other natural exploratory elements
- Install wall mounted arts chalk activity panel to allow the children to experience both visual and touch sensory experience.
- Lay new astroturf throughout play space
- Install two shade sail structures over fort and bike track playspaces
- Paint lower exterior building





Archers Street - Playground Upgrade

At Archers Street our team created a bestofke playscape which created a new entry for this child care centre. This included:

- Uplift existing astroturf
- Remove existing equipment
- Remove existing fencing
- Lay new artificial turf and soft fall
- Cubby House – completely customised cubby house with rubber soft fall and slide on hill
- New yarning circle with timber logs and rubber wet pour
- Custom curved sandpit with sandstone and timber
- New custom fencing with four viewing panels, timber curved and metal
- New plants and trees





Currumbin Playscape Upgrade

It takes a special eye for detail to create a space that caters to different developmental stages for children. In this playspace there was freeplay with new astroturf laid. Sandplay – with a new sandstone and timber deck sandpit and a planter box next to it. Active and creative play were created with an activity fort that was fit for all ages and included dual slides, rock climbing, viewing windows overlooking road and a cubbyhouse and bike path. Here is what Mathiou Services achieved over a staged 4 week period:

- Remove existing swingset and plant-a-box
- Uplift and remove existing astroturf and soft-fall
- Remove a few existing trees
- Lay new astroturf and softfall underlay for fort area
- Box existing mature trees with timber seating
- Design and build a custom fort with a bike path, storage, double slides and climbing wall made of natural timber
- Lay rubber wetpour for bike path with road markings
- Insert new sand pit and plant-a-box garden bed





Fitouts

Commercial fitouts are vital to ensure that the inside of your facility not only suits the outside, but it should also reflect the company's brand and values.

Our expert team can assist you with the creation of your facility's ideal vision while ensuring the planning, designing and constructing stage runs as smoothly as possible. Whether it is a total renovation or even just a new upgrade, every project is customised to your specific requirements and requests.





MATHION
Services
MEETS ALL YOUR

EM1822B DG

45 60 75 90 105 120 135 150 165 180

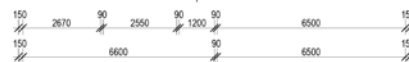
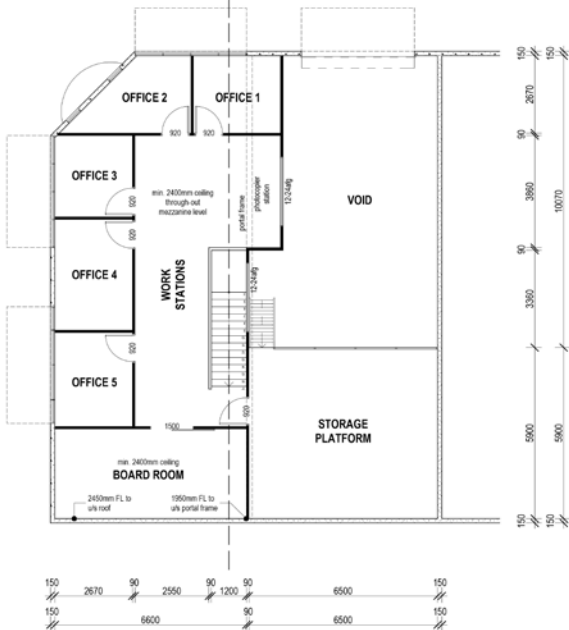
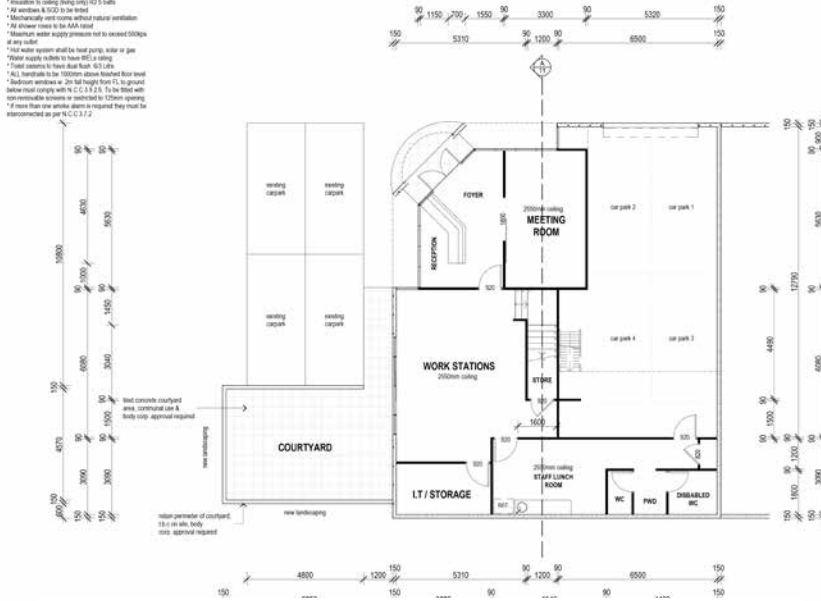
Burleigh - Commercial Office Fitout

Creating a unique and special space for every facility is something the team at Mathiou Services specialises in. Throughout this project our team took the time to produce an exceptional commercial office fitout that corresponded with the company's values and designed to suit the company's corporate colours through the use of;

- Vinyl flooring
- Expansive windows
- Main work station room
- Courtyard
- IT / storage room
- Lunch room
- Reception area with a foyer
- Boardroom
- 6 individual offices
- Boardroom
- Storage platform.

NOTES

- * If all heights to WC show as per N.C.C. 3.1.3
- * Provide CPC & load water provision to DW system
- * All external and through doors & windows to be measured on site and confirmed by builder
- * Marking to external walls
- * Measure to ceiling (living only) 22.5 walls
- * All windows & doors to be fixed
- * Mechanically vent rooms without natural ventilation
- * All shower trays to be ADA compliant
- * Maximum water supply pressure not to exceed 500kpa at any outlet
- * Hot water system shall be hot pump water or gas
- * Water supply subject to local DWS in writing
- * Toilet cisterns to have flush flush 6.5 Litre
- * All windows to be 1000mm above finished floor level
- * Bedroom windows to be 2m tall height from FL to ground
- * Below ground comply with N.C.C. 3.1.7.1. To be fixed with non-removable screens or restricted to 120mm opening
- * If more than one window screen is required they must be interconnected as per N.C.C. 3.1.7.2





Brisbane High-Rise - Commercial Office Fitout

This office upgrade covered the demolition, restructure and office fit-out of a commercial space in Brisbane CBD. We created a 360 degree free-flowing space for employees to work more productively and enjoy. The scope of works included:

- Concept development including plans and drawings
- Construction documentation/ management
- Obtain building permit as required by BCA
- Removed six key walls to create an open flowing office area (previously 4 separate secured rooms and storage area)
- Demolish and remove existing partition walls, glass and doors
- Remove existing ceiling tiles, grid, existing carpet, floor tiles and vinyl
- Disconnect existing plumbing fixtures and waste points
- Dismantle and remove existing workstations and furniture
- Supply and install 820m of suspended grid ceiling with acoustic tiles
- Disconnect electrical data and power to make safe and upgrade various electrical & data items including lighting
- Supply and install drywall/glazed partitions as per concept plan



- Drain existing sprinklers and reinstall sprinkler heads to suit new layout
- Hydraulic works for waste points and new plumbing fixtures to DDA and kitchen
- Install new swipe access to separate general public from office space
- Supply and install joinery including boardroom credenza, shelving & storage, kitchen bench, overheads, drawers, and open shelving
- Modify existing supply and return air ductwork and outlets to facilitate new layout
- Supply & Install 54 x workstations, chairs, soft wiring for workstations.
- Supply 25x workstation screens
- Supply & install 9 tambour door units with planters
- Added new conference room spaces and upgraded existing
- A secure reception area for welcoming visitors including company signage installation and graphics
- Paint new partitions and doors
- Full builders clean before handover



Aroona Early Learning Centre Interior and Exterior Fit out and playground upgrade

This 2105m² property was completely transformed from the inside out spreading the companies flare throughout the internal cabinetry and exterior fencing breathing new life into the 17 year old kindy. The renovations included the following:

- Demolish partitions, doors, blockwork walls, glazed windows/ doors, floor finishes and existing joinery
- Reinforced concrete slab, and beams for slab
- Rendered existing brick walls
- Extend building and install new cladding to exterior of babies/toddlers areas
- Install three new kids bathrooms with showers and nappy change areas
- Install new vinyl and carpet tiles, skirting's and grind exterior floor
- Install new roofing, gutters, and down pipes to new babies area
- Internal painting for new and existing partitions, roofs and doors
- Install two offices, a laundry, a staff room, commercial kitchen and reception
- Install new signage
- Install new down-lights, fans, power points, emergency / evacuation lighting, dimmable feature lights to cot rooms and general
- Install communications including – Data and phone points throughout
- Install security – front door – door release & security key pad, external and CCTV security cameras and intercoms
- Install new smoke detectors, fire extinguishers and fire blanket
- Landscaping and building three playscapes areas for three different age groups – toddlers & babies, kindy and prep which included:
 - Dry creek bed, custom made three level timber fort with dual slide and climbing nets and wrap around bike tracks going under.
 - New astroturf
 - Refurbished sandpit
 - New colour and timber fencing
 - New mud kitchen and pit





Kitchens

Kitchens are an important space in every facility as they should be personalised to suit the centre. They are functional workspaces that need to meet the needs of the people using it.

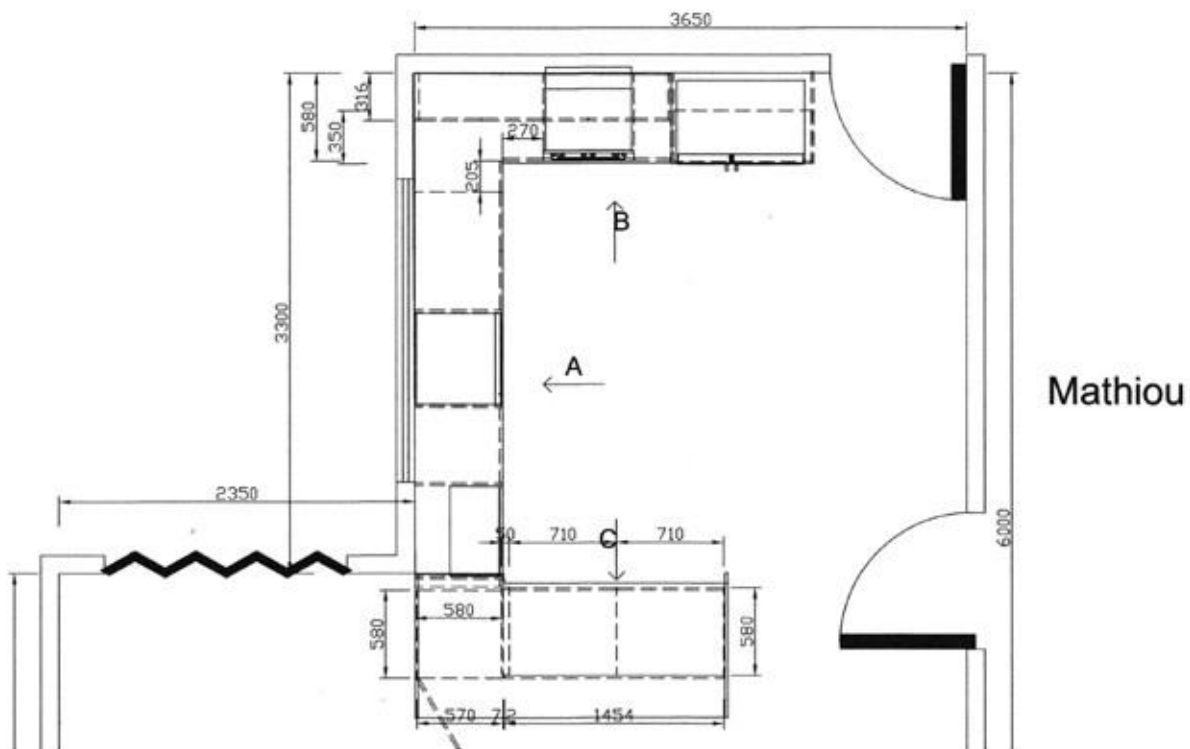
Our team has a wide variety of knowledge on kitchen materials and understand what is best for each application. As there are so many options readily available, Mathiou Services are able to assist you with what style of kitchen will suit your needs before construction occurs.



Airport West - Kitchen Upgrade

Throughout this project the team at Mathiou Services had to completely redesign the kitchen to suit our client's needs while ensuring it maintained functionality by including;

- Soft close draws
- Cupboards for all their storage needs
- Oven with a stove top
- Dishwasher for convenient cleaning
- Under mount sink
- Microwave space
- Fridge space
- Stone bench top
- Pull out bin.

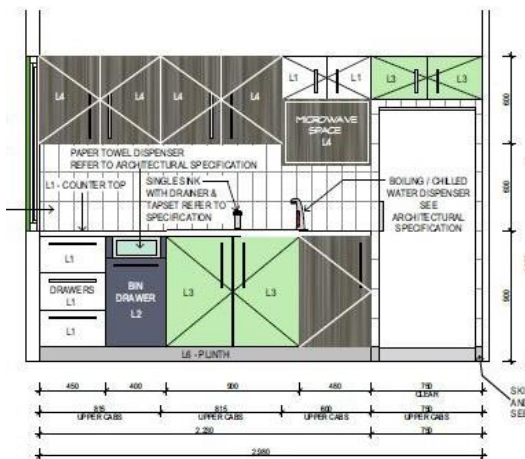
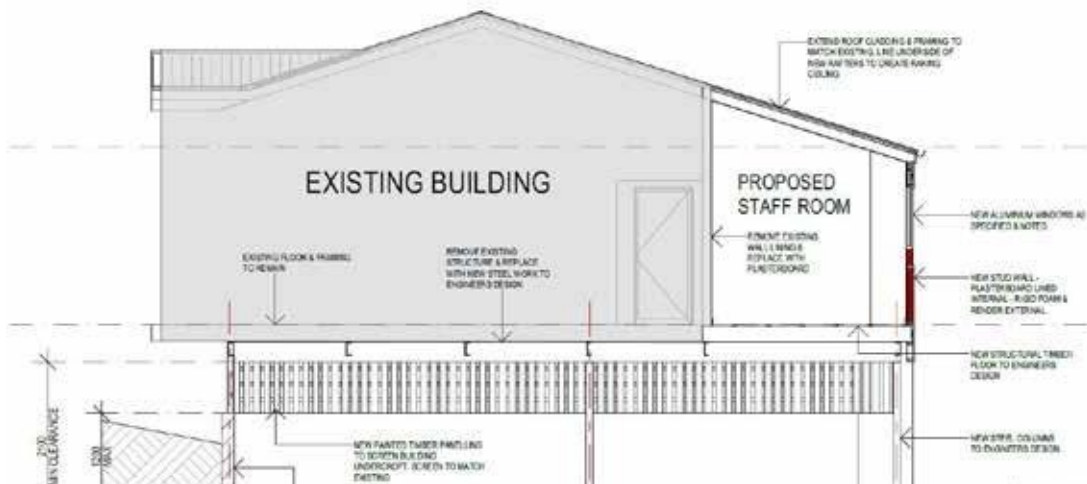




Tarragindi - Staff Room Building Extension and Kitchen Installation

As part of a bigger project, we were engaged to extend this building to add a staff room with a kitchenette based on architects and engineer concepts provided. This included:

- Demolition of the entire play yard & removing all unwanted surface materials, play and shade structures, unwanted gardens and any unwanted soils including waste management
- Excavate the existing land
- Construct new block retaining walls under existing building.
- Build new foundations by inserting pillars for the new building
- Remove the existing exterior wall
- Electrical Fit out
- Plumbing fit out
- Erect steel subfloor structure
- Install new subfloor framing
- Install new windows
- Install new kitchen joinery and fixtures
- Install new airconditioner
- Clad and paint exterior
- Paint interior
- Lay new vinyl flooring
- Install new internal access door



STAFF ROOM JOINERY



NEW FLOOR JOINTS REMAIN TO BE



Bathrooms

Every facility requires fresh and hygienic bathrooms for all the children and their staff members. Mathiou Services can assist in completely customising your facilities bathroom while meeting all requirements necessary.

Our dedicated team can start by providing detailed designs of the bathroom that will best suit the space. Once this is completed our project team will liaise and organised the works so that your bathroom is transformed.







Floor Replacement

Just like the paint on your walls, your flooring can deteriorate through wear and tear. Our flooring technicians and project managers are committed to delivering an exemplary level of professionalism with after hour service offered to cover all your flooring needs.

If you would like to remove and replace your floor, we can assist you with choosing an appropriate type of floor to suit your facility. We offer colour consultations and colour matches to provide a seamless finish.





Independant Living Unit Retirement Village - Floor Replacement

For this Retirement Village in Queensland a complete renovation was required within a tight timeframe, ready for the new owners. Flooring was just a small portion of the scope but for the owners it was about being more sensitive to their requirements. They needed the flooring to be one material, wheel friendly, hard wearing and sensitive to eyesight.

Our team was required to:

- Uplift existing tiles, carpet & underlay throughout unit;
- Grind and skim concrete floor ready to lay new vinyl;
- Lay new vinyl to lounge, kitchen, dining and hallway;
- Clean & grind concrete, fill in existing cracks in garage and coat garage flooring with epoxy.





Before

After



Painting

A new coat of paint from our decorating team can transform the interior and exterior of your facility. We can colour match to current colour palettes in your facility or offer a new design.

We are dedicated to our clients and understand how time constricting some services can be. This is why we are happy to offer after hours service to complete and finish the job with little interruption to the operation of the facility.

Our highly qualified team of technicians use only quality, durable and long-lasting paints in a variety of tints and finishes.



Gosnells & Morley - External & Internal Painting

Having a fresh and clean looking facility on the inside and out can really make an impact on your customers. Here at Mathiou Services we specialise in being a one stop shop for all your building, construction and maintenance needs and are ready to assist with your internal and external painting. In order to complete this project the Mathiou Services team have;

- Prepared area with drop sheets and plastics to protect surfaces;
- Patched and plastered any defects to ensure a smooth finish;
- Ensured all surfaces that were painted are dry and cleaned free of all dirt, grit, grease, mould, mildew and all loose, peeling, blistering, chalking or scaling paint;
- Applied low VOC paint to surfaces; and
- Cleaned site ready for the facility to open.



Before



During



After



Brisbane CBD

External & Internal Paint

No matter the age of a building, you can count on fresh paint to bring a sense of care, warmth and ultimately breath new life back into it. With this classic Queenslander building, built in 1989 the intricate details in the cornices and fret work meant a little more care when painting but the transformation was definitely rewarded.

The scope included:

- Clean, sand and prep walls interior and exterior for paint.
- Paint all trimmings from blue to white
- Paint all interior walls and doors
- Remove carpeted wall, sand and paint
- Paint exterior building, stairs, patios and fences





Mathiou Services

Contact Details

National Office Contact

Ph 1300 363 423 | office@mathiouservices.com.au
PO Box 4609, Elanora, QLD, 4221

South Queensland Office

office@mathiouservices.com.au

North Queensland Office

northqueensland@mathiouservices.com.au

Licences

ABN: 99 149 465 903 |

QBCC Licence: 1202203 | NSW Fair Trading Licence: 273391c

Our clients







Ph 1300 363 423

connect@mathiouservices.com.au

www.mathiouservices.com.au

ABN 99 149 465 903

QBCC Licence: 1202203 | NSW Fair Trading Licence: 273391c